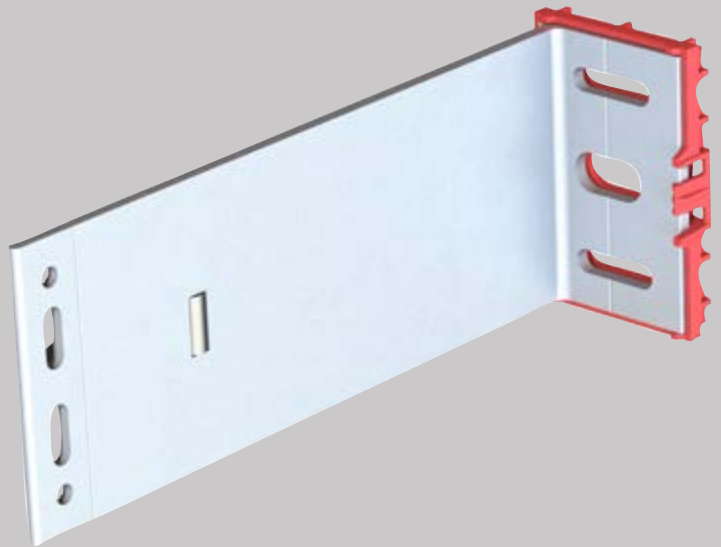




MFT-FOX VI-2L- HANGERS- UNDERCUT ANCHORS

Hilti facade system



CONTENT AND OVERVIEW

| | |
|-----------------------------|-------|
| Panels | 3 |
| Application and Description | 4 |
| System Drawings | 5-18 |
| Brackets Range | |
| MFT-MFI Small | 19 |
| MFT-MFI Medium | 20 |
| MFT-MFI Large | 21 |
| Bracket Profile Adjustment | 22 |
| Products Range | 23-24 |

MFT-MFI-2L-hangers-undercut anchors



Fiber-cement



HPL



Ceramic



Stone



This is an interactive page! Click on the move-back button to jump back to the CONTENT AND OVERVIEW.





APPLICATION AND DESCRIPTION

FOX VI-2L-hangers-undercut anchors

The system consists of brackets and profiles, and the system is specifically designed for vertical/horizontal substructures with undercut anchors for invisible fixing in ventilated facades.

The brackets are supplied with pre-assembled isolators and, according to the method of installation to the base material – anchors, screws or direct fastening – with different hole geometries in the base plate (available hole geometries are shown in the catalogue or on the following pages).

The brackets are designed with both fixed and flexible points to allow for thermal expansion of the profile. The fixed point takes the weight of the panels and substructure and the proportional wind loads, while the flexible point only assumes the proportional wind loads.

The vertical profiles are connected to the brackets with specially designed screws for fixed and flexible points. The fixed points do not allow the profiles vertical movement against the brackets, while the flexible points allow virtually frictionless sliding of the profiles against the brackets. The flexible point makes sure that there are no additional loads on the substructure from the profile's expansion forces.

The adjustment of the profiles against the brackets is facilitated by a 'helping hand'. The helping hand keeps the profile in position whilst the profile is being fixed with screws, allowing a fast connection to the bracket. With this system, wall tolerances of up to 40 mm can be perfectly balanced. The brackets are available in 3 different sizes (large, medium & small) from 40 mm to 300 incl. 6mm isolator in 20 mm increments. The isolator separates the substructure from the base material to reduce thermal bridging.

The horizontal hanger profiles with elongated application will be fixed on the vertical profiles. Fix points will be performed with 2 screws in the elongated holes; flexible points with 1 screw. Hangers are available in three different variants – fix-hangers; leveling-hangers and leveling-hangers with a fixation hole to the hanger profile.

Advantages

- Flexible design using fixed and flexible points
- 3 different sizes of brackets (large, medium & small)
- 40 mm adjustment capability of the profiles in the brackets
- Brackets can be mounted using a range of methods - anchors, screws or direct fastening
- 6 mm isolator separates the substructure from the base material to reduce thermal bridging
- Substructures can be designed with PROFIS Facade to generate technically-sound and economically optimized solutions
- Can be used with all common Fibre cement, HPL, Stone cladding materials

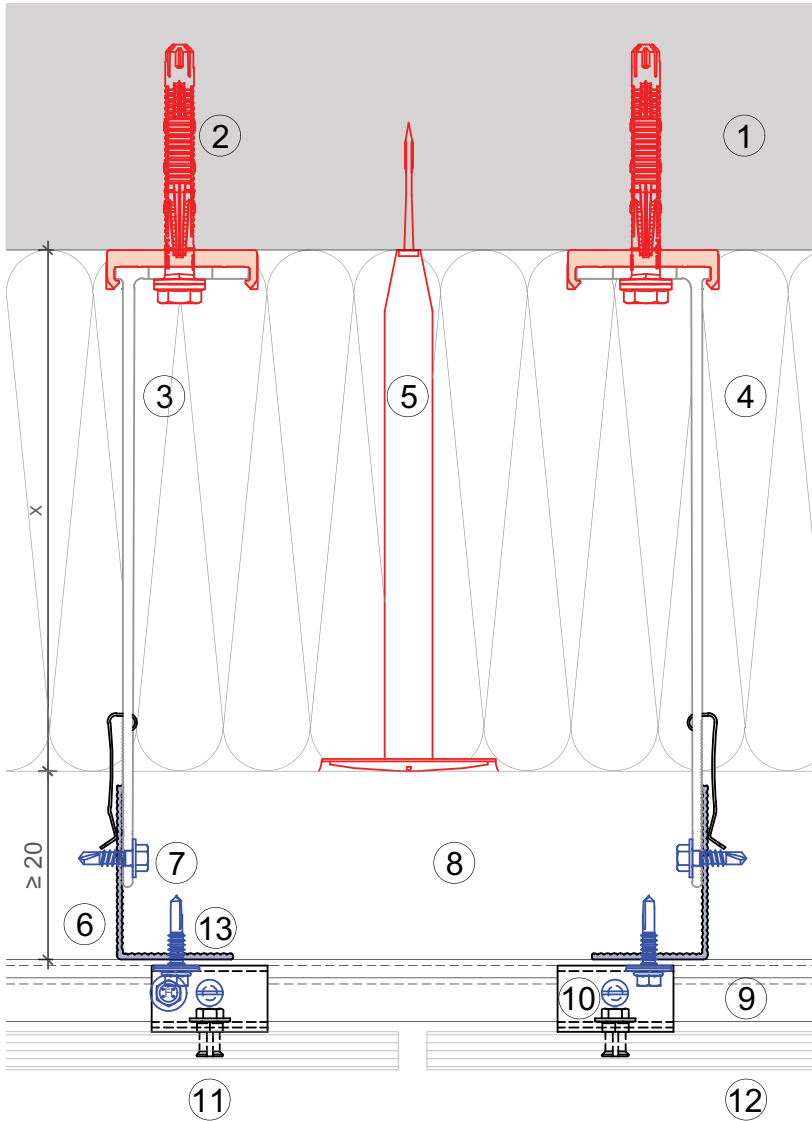
VIEW OF CLADDING



This is an interactive page! By clicking on a system part you get directed to the respective detail page.
Click on the move-back button to jump back to the CONTENT AND OVERVIEW.

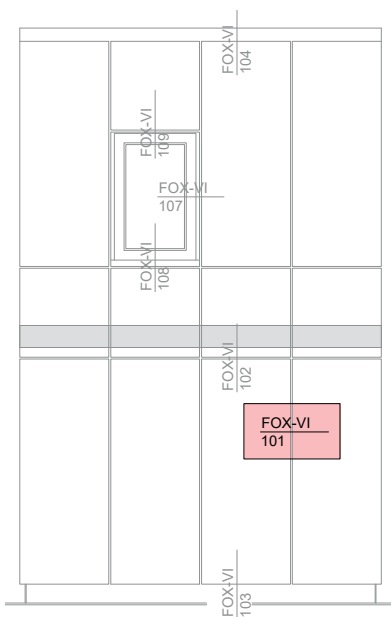


MFT-MFI 101



Legend:

- ① Base material
- ② Anchor acc. to static
- ③ Bracket and isolator MFT-FOX VI
- ④ Insulation
- ⑤ Fixing insulation
- ⑥ Profile
- ⑦ Self drilling screw
- ⑧ Ventilation gap
- ⑨ Load-bearing hanger profile MFT-HP
- ⑩ Hanger MFT-H
- ⑪ Cladding fixing
- ⑫ Cladding
- ⑬ Profile fastener

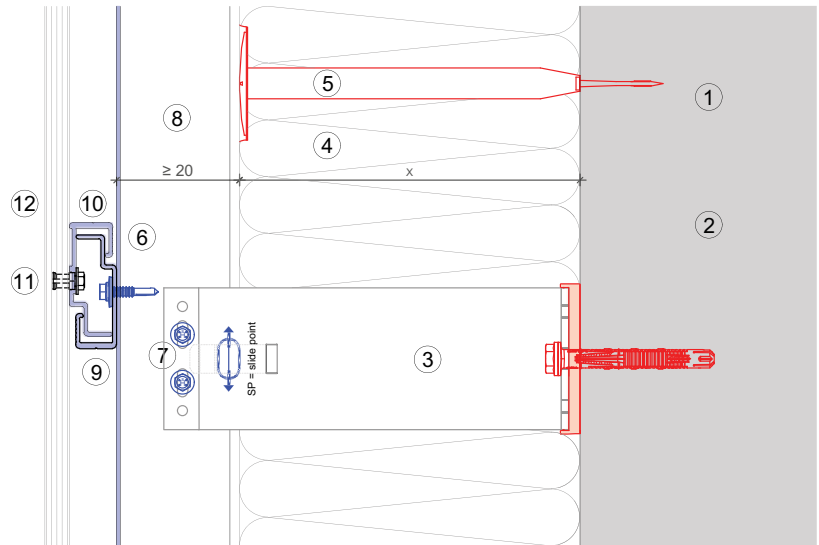


This is an interactive page! Click on the move-back button to jump back to the VIEW OF CLADDING.

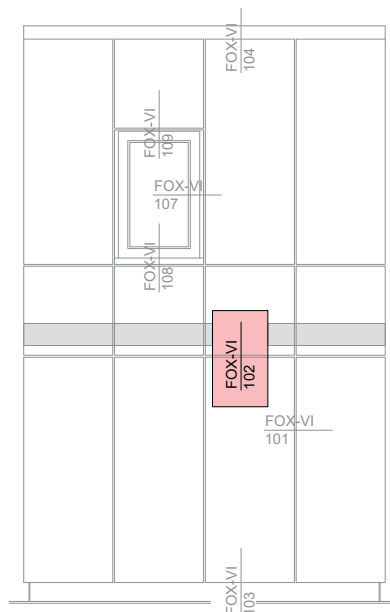
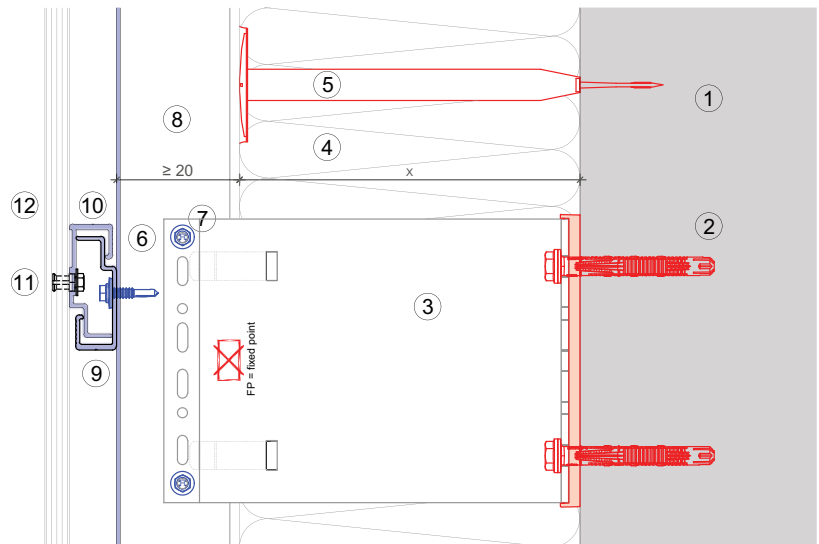
MFT-MFI 102

Legend:

- ① Base material
- ② Anchor acc. to static
- ③ Bracket and isolator MFT-FOX VI
- ④ Insulation
- ⑤ Fixing insulation
- ⑥ Profile
- ⑦ Self drilling screw
- ⑧ Ventilation gap
- ⑨ Load-bearing hanger profile MFT-HP
- ⑩ Hanger MFT-H
- ⑪ Cladding fixing
- ⑫ Cladding
- ⑬ Profile fastener



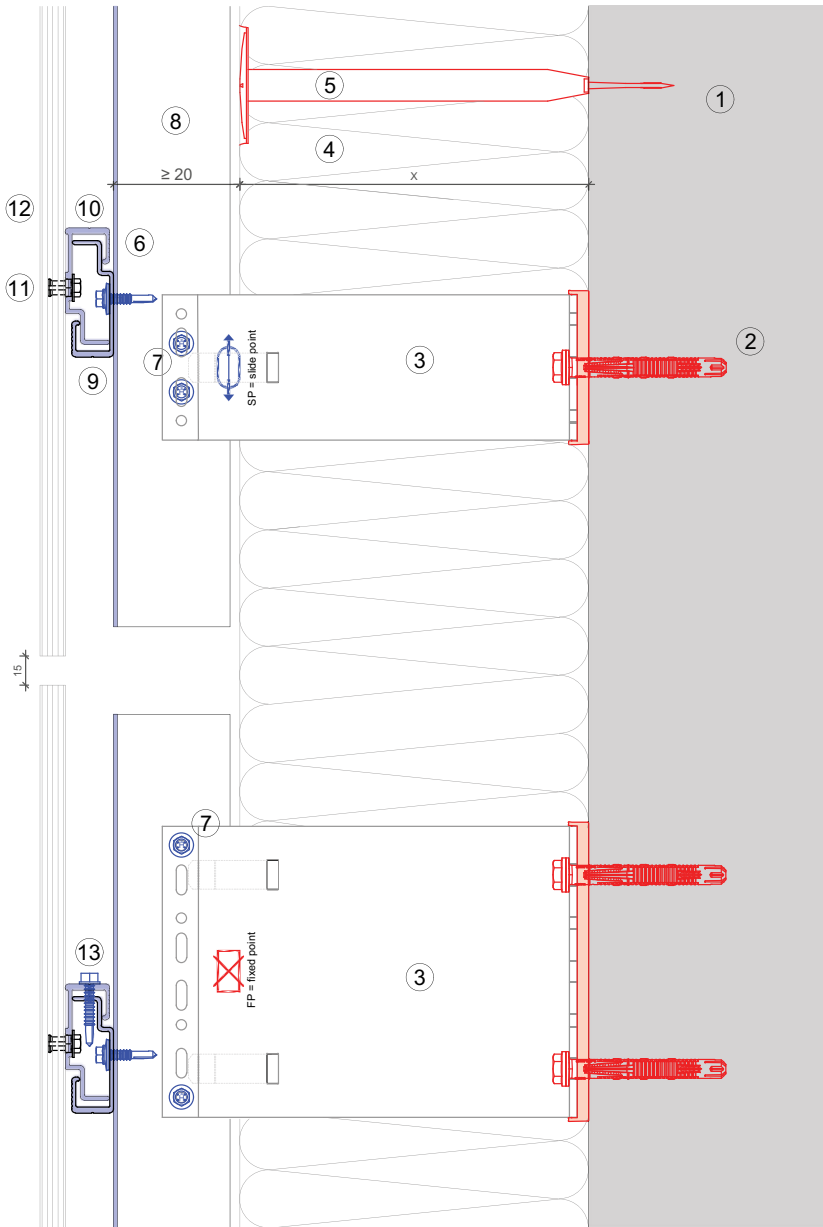
Vertical section-fixed point



This is an interactive page! Click on the move-back button to jump back to the VIEW OF CLADDING.

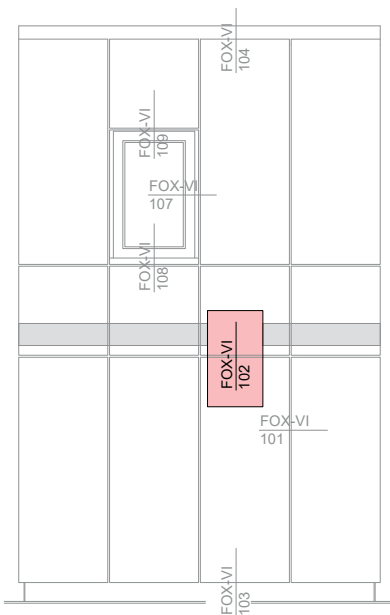


MFT-MFI 102



Legend:

- ① Base material
- ② Anchor acc. to static
- ③ Bracket and isolator MFT-FOX VI
- ④ Insulation
- ⑤ Fixing insulation
- ⑥ Profile
- ⑦ Self drilling screw
- ⑧ Ventilation gap
- ⑨ Load-bearing hanger profile MFT-HP
- ⑩ Hanger MFT-H
- ⑪ Cladding fixing
- ⑫ Cladding
- ⑬ Profile fastener

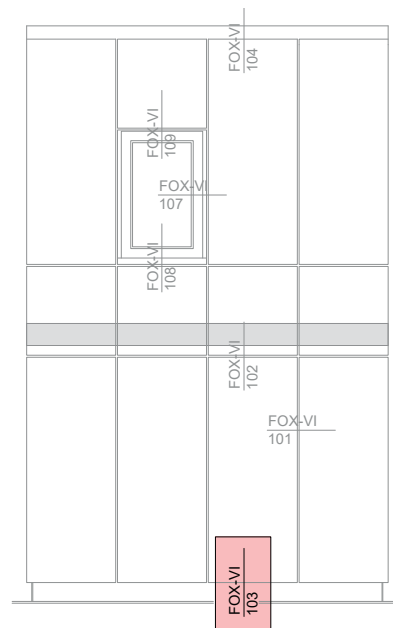
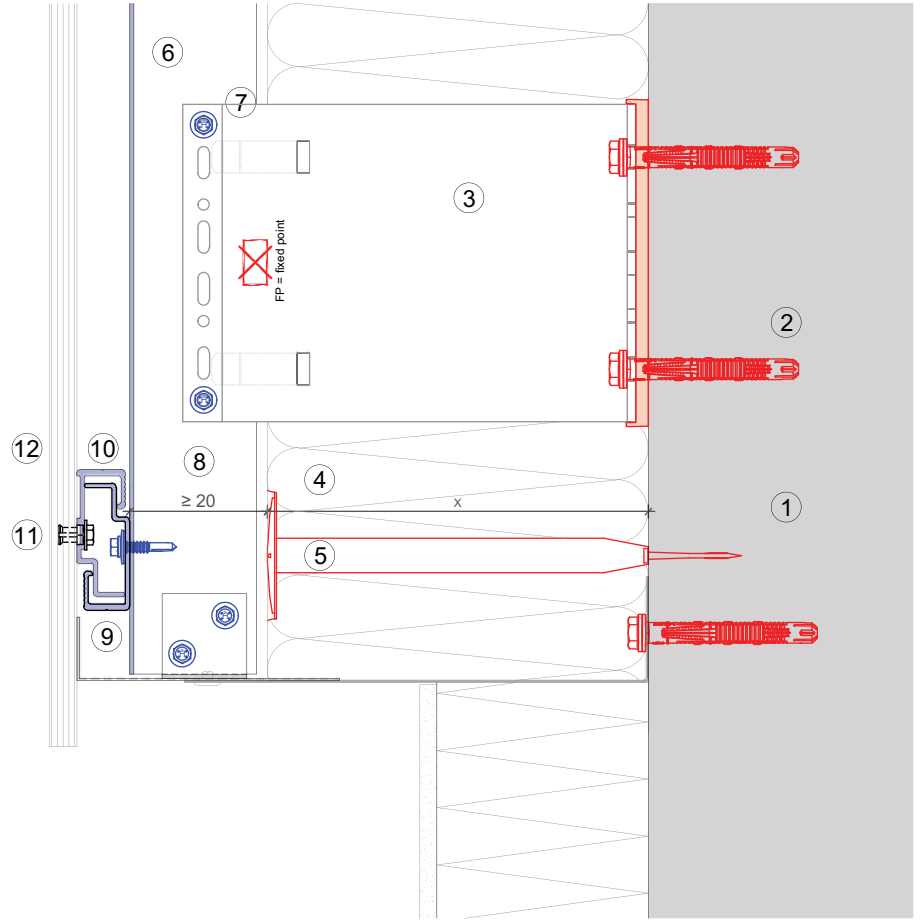


This is an interactive page! Click on the move-back button to jump back to the VIEW OF CLADDING.

MFT-MFI 103

Legend:

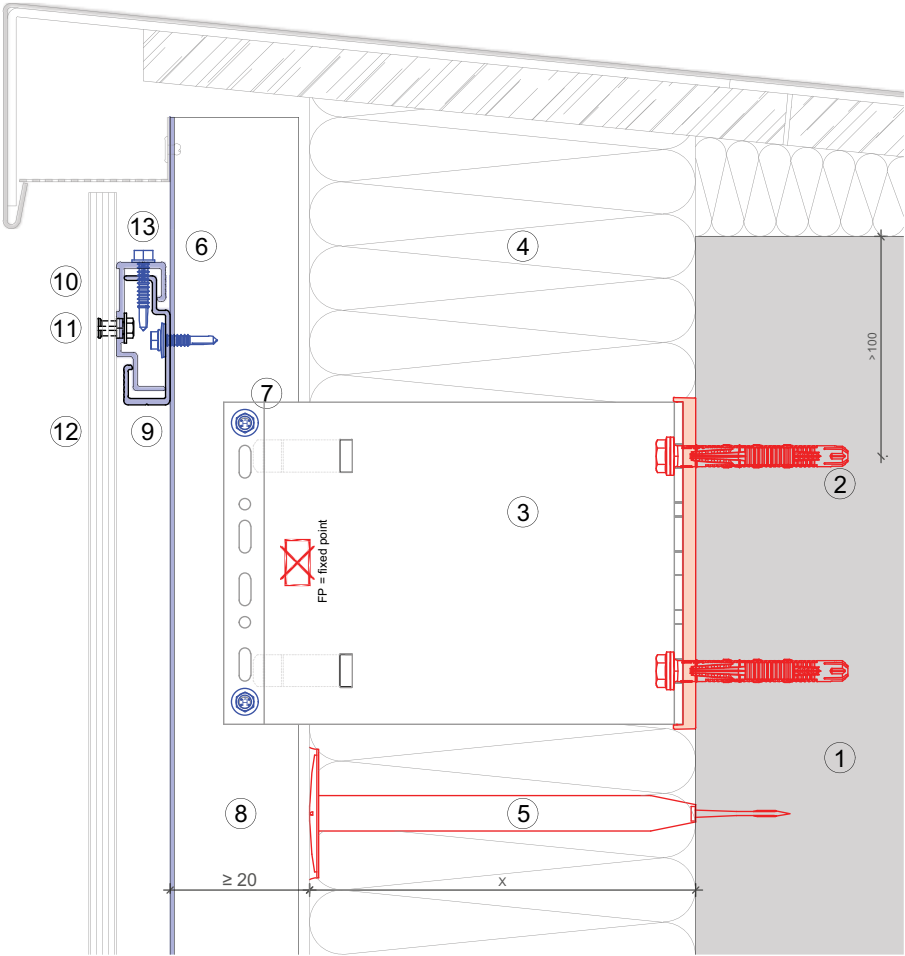
- ① Base material
- ② Anchor acc. to static
- ③ Bracket and isolator MFT-FOX VI
- ④ Insulation
- ⑤ Fixing insulation
- ⑥ Profile
- ⑦ Self drilling screw
- ⑧ Ventilation gap
- ⑨ Load-bearing hanger profile MFT-HP
- ⑩ Hanger MFT-H
- ⑪ Cladding fixing
- ⑫ Cladding



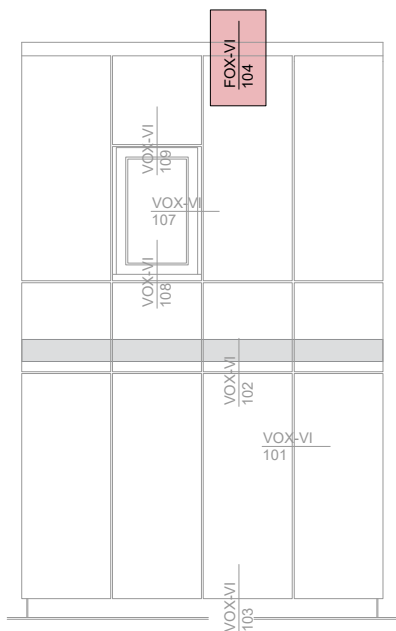
This is an interactive page! Click on the move-back button to jump back to the VIEW OF CLADDING.



MFT-MFI 104



- Legend:**
- ① Base material
 - ② Anchor acc. to static
 - ③ Bracket and isolator MFT-FOX VI
 - ④ Insulation
 - ⑤ Fixing insulation
 - ⑥ Profile
 - ⑦ Self drilling screw
 - ⑧ Ventilation gap
 - ⑨ Load-bearing hanger profile MFT-HP
 - ⑩ Hanger MFT-H
 - ⑪ Cladding fixing
 - ⑫ Cladding

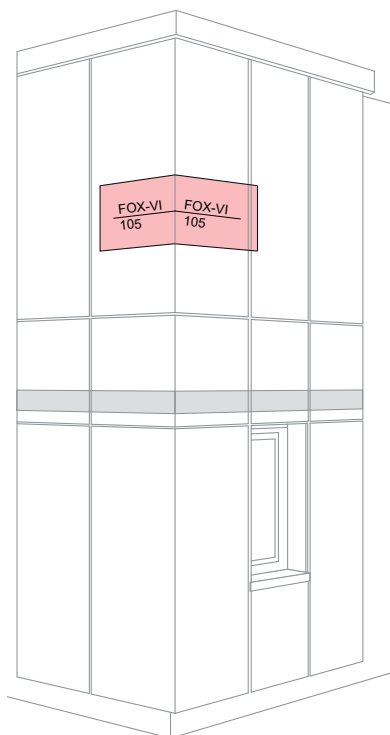
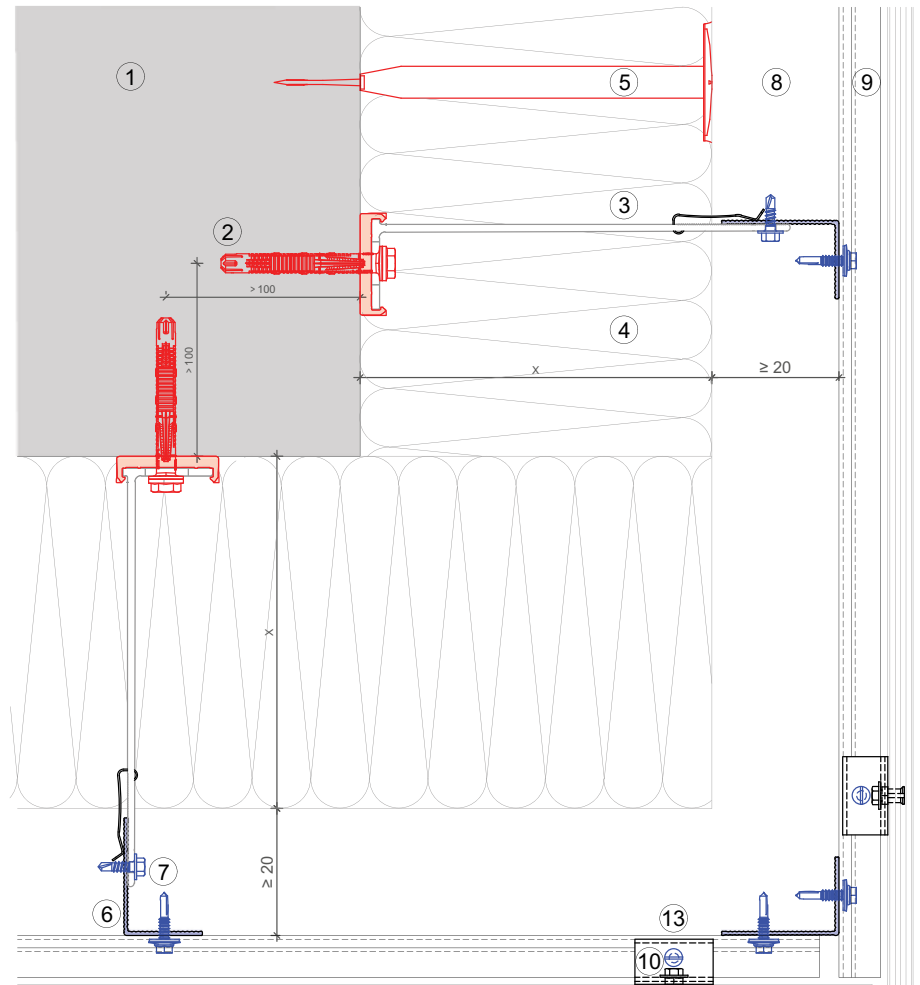


This is an interactive page! Click on the move-back button to jump back to the VIEW OF CLADDING.

MFT-MFI 105

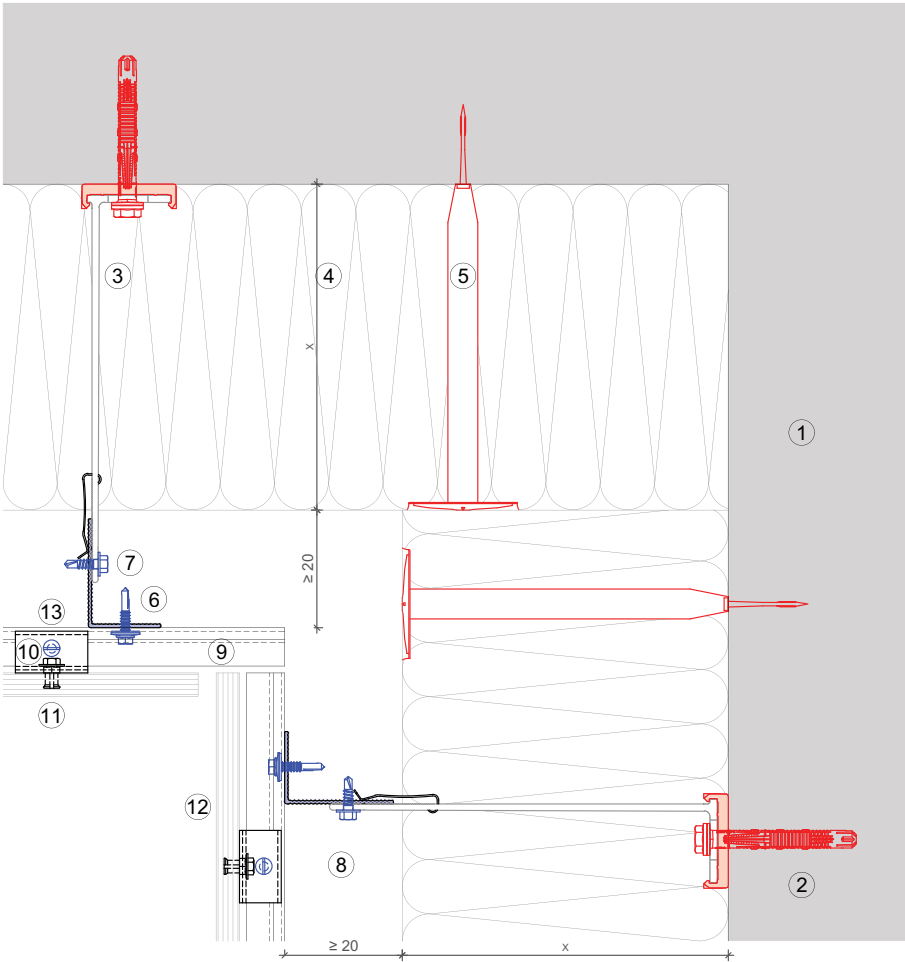
Legend:

- ① Base material
- ② Anchor acc. to static
- ③ Bracket and isolator MFT-FOX VI
- ④ Insulation
- ⑤ Fixing insulation
- ⑥ Profile
- ⑦ Self drilling screw
- ⑧ Ventilation gap
- ⑨ Load-bearing hanger profile MFT-HP
- ⑩ Hanger MFT-H
- ⑪ Cladding fixing
- ⑫ Cladding
- ⑬ Profile fastener



This is an interactive page! Click on the move-back button to jump back to the VIEW OF CLADDING.





Legend:

- ① Base material
- ② Anchor acc. to static
- ③ Bracket and isolator MFT-FOX VI
- ④ Insulation
- ⑤ Fixing insulation
- ⑥ Profile
- ⑦ Self drilling screw
- ⑧ Ventilation gap
- ⑨ Load-bearing hanger profile MFT-HP
- ⑩ Hanger MFT-H
- ⑪ Cladding fixing
- ⑫ Cladding
- ⑬ Profile fastener

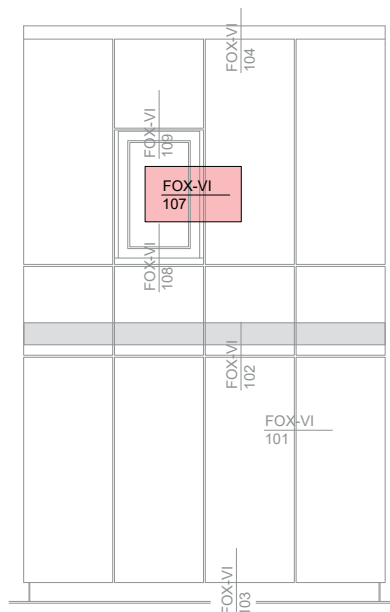
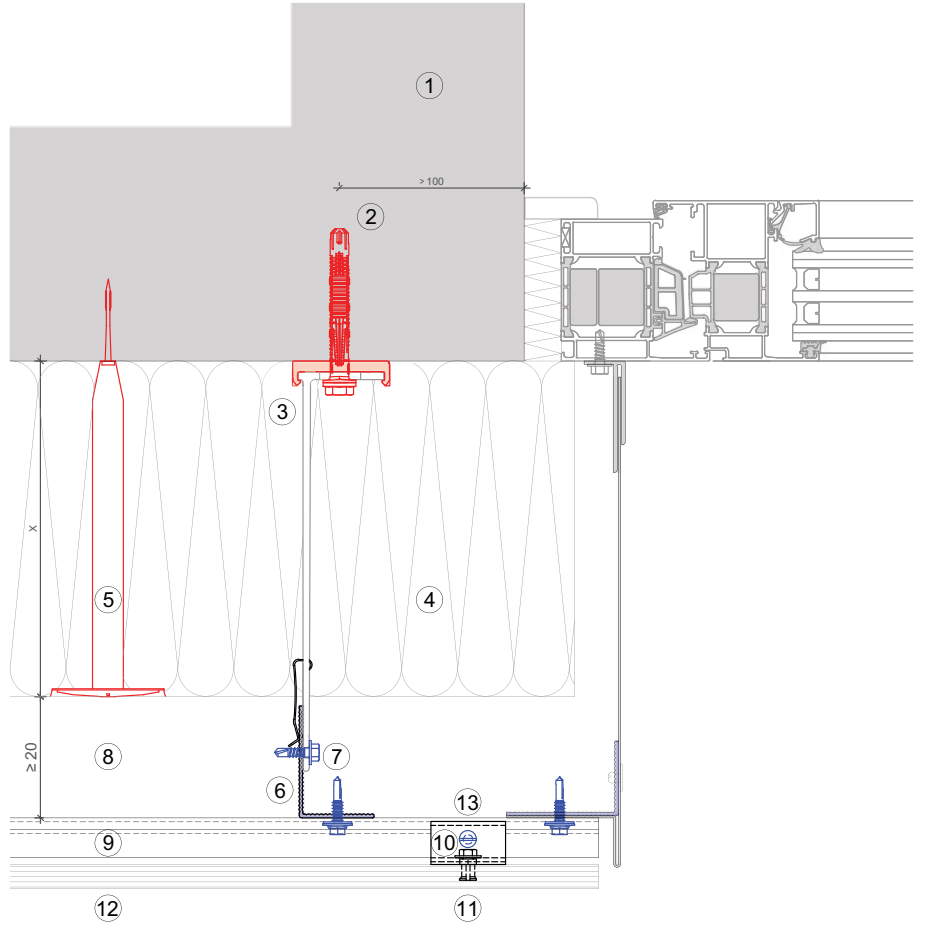


This is an interactive page! Click on the move-back button to jump back to the VIEW OF CLADDING.

MFT-MFI 107

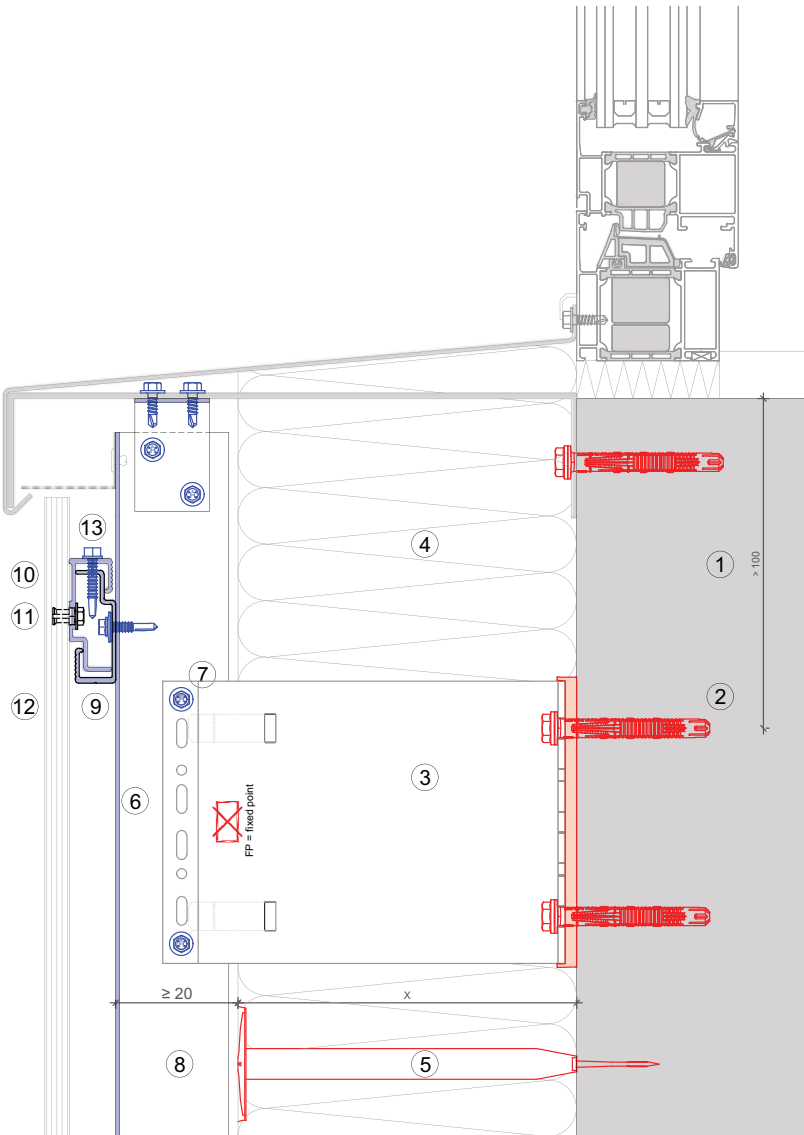
Legend:

- ① Base material
- ② Anchor acc. to static
- ③ Bracket and isolator MFT-FOX VI
- ④ Insulation
- ⑤ Fixing insulation
- ⑥ Profile
- ⑦ Self drilling screw
- ⑧ Ventilation gap
- ⑨ Load-bearing hanger profile MFT-HP
- ⑩ Hanger MFT-H
- ⑪ Cladding fixing
- ⑫ Cladding
- ⑬ Profile fastener



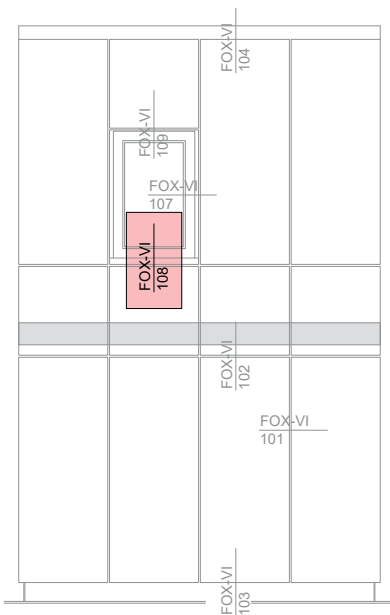
This is an interactive page! Click on the move-back button to jump back to the VIEW OF CLADDING.





Legend:

- ① Base material
- ② Anchor acc. to static
- ③ Bracket and isolator MFT-FOX VI
- ④ Insulation
- ⑤ Fixing insulation
- ⑥ Profile
- ⑦ Self drilling screw
- ⑧ Ventilation gap
- ⑨ Load-bearing hanger profile MFT-HP
- ⑩ Hanger MFT-H
- ⑪ Cladding fixing
- ⑫ Cladding
- ⑬ Profile fastener

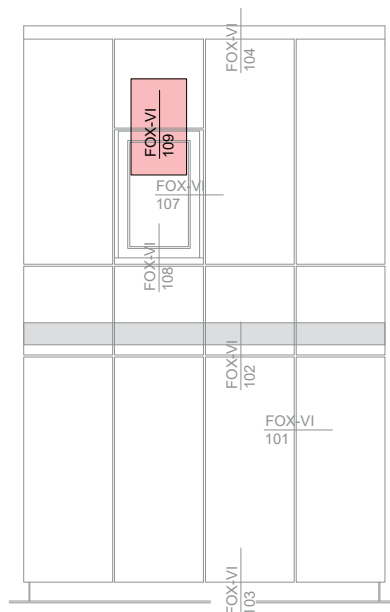
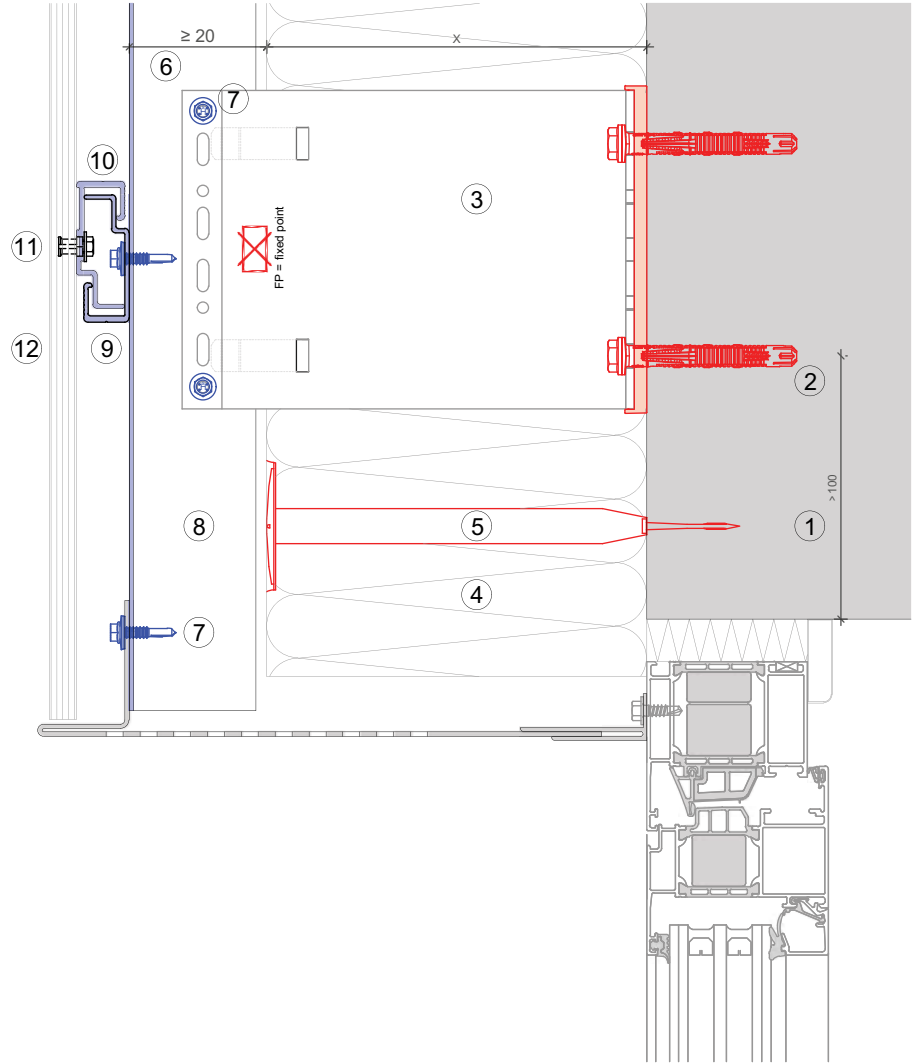


This is an interactive page! Click on the move-back button to jump back to the VIEW OF CLADDING.

MFT-MFI 109

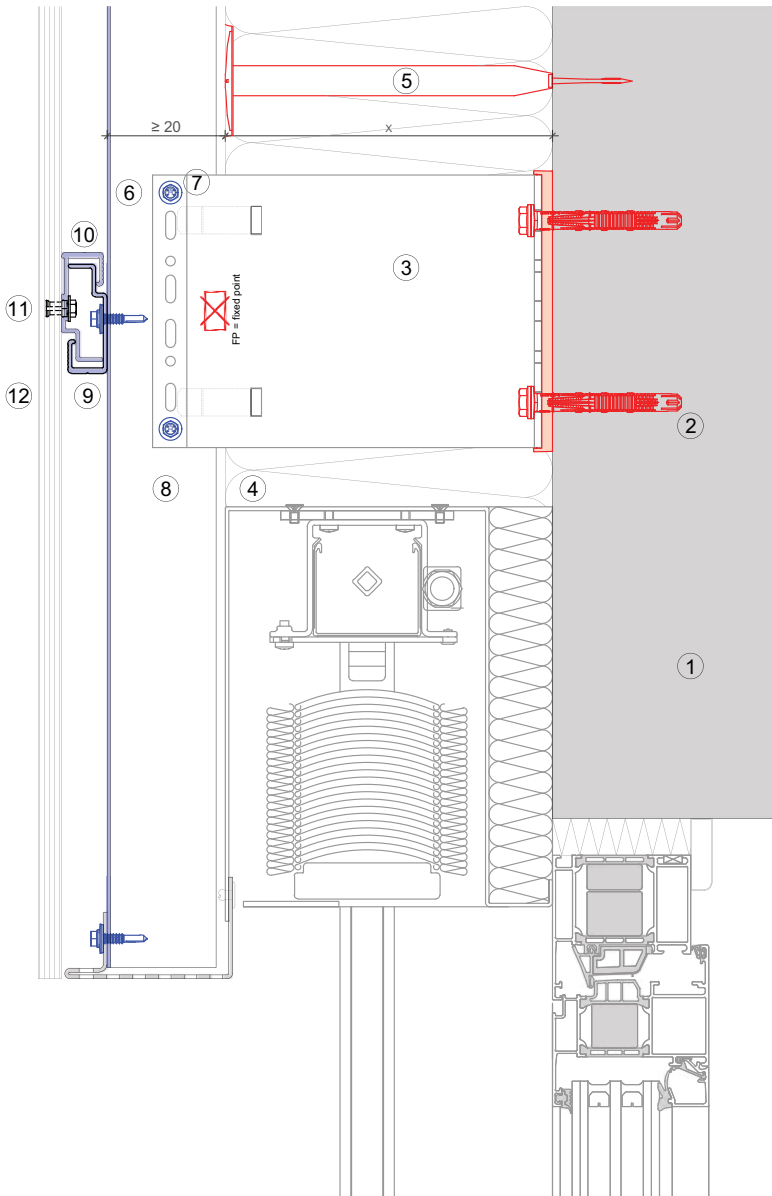
Legend:

- ① Base material
- ② Anchor acc. to static
- ③ Bracket and isolator MFT-FOX VI
- ④ Insulation
- ⑤ Fixing insulation
- ⑥ Profile
- ⑦ Self drilling screw
- ⑧ Ventilation gap
- ⑨ Load-bearing hanger profile MFT-HP
- ⑩ Hanger MFT-H
- ⑪ Cladding fixing
- ⑫ Cladding



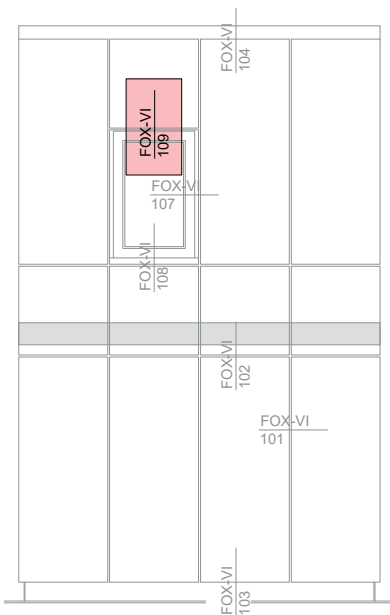
This is an interactive page! Click on the move-back button to jump back to the VIEW OF CLADDING.

MFT-MFI 109



Legend:

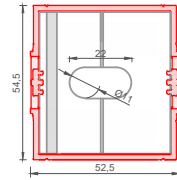
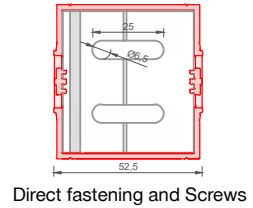
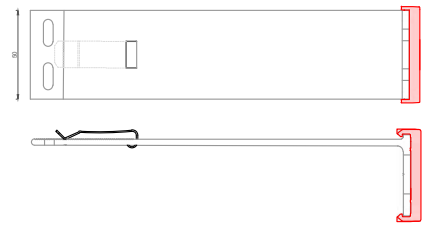
- ① Base material
- ② Anchor acc. to static
- ③ Bracket and isolator MFT-FOX VI
- ④ Insulation
- ⑤ Fixing insulation
- ⑥ Profile
- ⑦ Self drilling screw
- ⑧ Ventilation gap
- ⑨ Load-bearing hanger profile MFT-HP
- ⑩ Hanger MFT-H
- ⑪ Cladding fixing
- ⑫ Cladding



This is an interactive page! Click on the move-back button to jump back to the VIEW OF CLADDING.

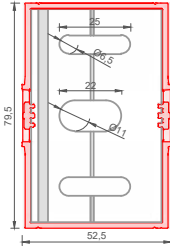
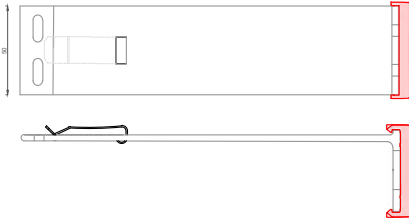
MFT-FOX VI Small

| Order description | Item No. | Length |
|---|----------|--------|
| DIRECT FASTENING and SCREWS D=6,5 mm | | |
| MFT-FOX VI 40 S 6.5 | 2305768 | 40 mm |
| MFT-FOX VI 60 S 6.5 | 2305769 | 60 mm |
| MFT-FOX VI 80 S 6.5 | 2305892 | 80 mm |
| MFT-FOX VI 100 S 6.5 | 2305893 | 100 mm |
| MFT-FOX VI 120 S 6.5 | 2305894 | 120 mm |
| MFT-FOX VI 140 S 6.5 | 2305895 | 140 mm |
| MFT-FOX VI 160 S 6.5 | 2305896 | 160 mm |
| MFT-FOX VI 180 S 6.5 | 2305891 | 180 mm |
| MFT-FOX VI 200 S 6.5 | 2305890 | 200 mm |
| MFT-FOX VI 220 S 6.5 | 2305889 | 220 mm |
| MFT-FOX VI 240 S 6.5 | 2305888 | 240 mm |
| MFT-FOX VI 260 S 6.5 | 2305887 | 260 mm |
| MFT-FOX VI 280 S 6.5 | 2305886 | 280 mm |
| MFT-FOX VI 300 S 6.5 | 2305885 | 300 mm |
| ANCHORS D=11 mm | | |
| MFT-FOX VI 40 S 11 | 2305884 | 40 mm |
| MFT-FOX VI 60 S 11 | 2305883 | 60 mm |
| MFT-FOX VI 80 S 11 | 2305882 | 80 mm |
| MFT-FOX VI 100 S 11 | 2305881 | 100 mm |
| MFT-FOX VI 120 S 11 | 2305880 | 120 mm |
| MFT-FOX VI 140 S 11 | 2305897 | 140 mm |
| MFT-FOX VI 160 S 11 | 2305898 | 160 mm |
| MFT-FOX VI 180 S 11 | 2305899 | 180 mm |
| MFT-FOX VI 200 S 11 | 2305900 | 200 mm |
| MFT-FOX VI 220 S 11 | 2305901 | 220 mm |
| MFT-FOX VI 240 S 11 | 2305902 | 240 mm |
| MFT-FOX VI 260 S 11 | 2305903 | 260 mm |
| MFT-FOX VI 280 S 11 | 2305904 | 280 mm |
| MFT-FOX VI 300 S 11 | 2305905 | 300 mm |



The length shown includes the isolator thickness.

BRACKETS RANGE



Direct fastening
Screws and
Anchors

MFT-FOX VI Medium

| Order description | Item No. | Length |
|--|----------|--------|
| DIRECT FASTENING, SCREWS D=6,5 mm and ANCHORS D=11 mm | | |
| MFT-FOX VI 40 M 6.5 / 11 | 2305984 | 40 mm |
| MFT-FOX VI 60 M 6.5 / 11 | 2305983 | 60 mm |
| MFT-FOX VI 80 M 6.5 / 11 | 2305982 | 80 mm |
| MFT-FOX VI 100 M 6.5 / 11 | 2305981 | 100 mm |
| MFT-FOX VI 120 M 6.5 / 11 | 2305980 | 120 mm |
| MFT-FOX VI 140 M 6.5 / 11 | 2305979 | 140 mm |
| MFT-FOX VI 160 M 6.5 / 11 | 2305978 | 160 mm |
| MFT-FOX VI 180 M 6.5 / 11 | 2305977 | 180 mm |
| MFT-FOX VI 200 M 6.5 / 11 | 2305976 | 200 mm |
| MFT-FOX VI 220 M 6.5 / 11 | 2305975 | 220 mm |
| MFT-FOX VI 240 M 6.5 / 11 | 2305974 | 240 mm |
| MFT-FOX VI 260 M 6.5 / 11 | 2305973 | 260 mm |
| MFT-FOX VI 280 M 6.5 / 11 | 2305972 | 280 mm |
| MFT-FOX VI 300 M 6.5 / 11 | 2305971 | 300 mm |

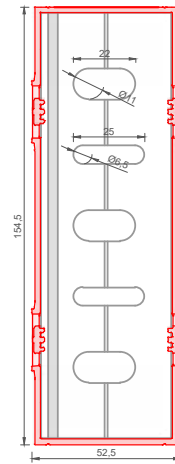
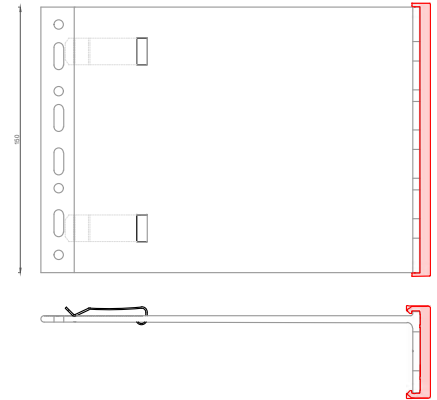
The length shown includes the isolator thickness.

BRACKETS RANGE

MFT-FOX VI Large

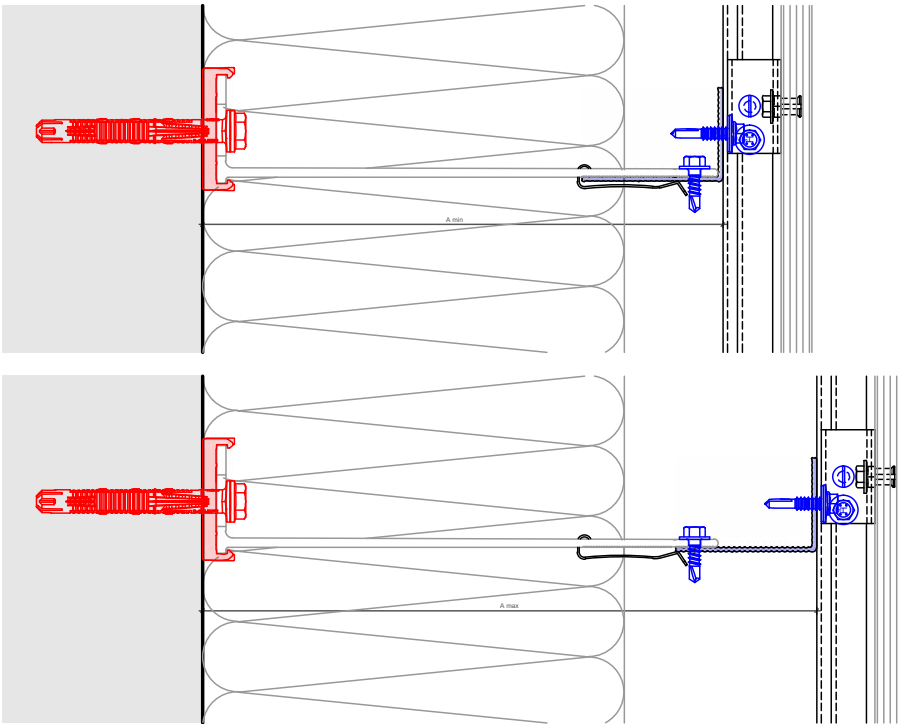
| Order description | Item No. | Length |
|--|----------|--------|
| DIRECT FASTENING, SCREWS D=6,5 mm and ANCHORS D=11 mm | | |
| MFT-FOX VI 40 L 6.5 / 11 | 2305950 | 40 mm |
| MFT-FOX VI 60 L 6.5 / 11 | 2305949 | 60 mm |
| MFT-FOX VI 80 L 6.5 / 11 | 2305948 | 80 mm |
| MFT-FOX VI 100 L 6.5 / 11 | 2305947 | 100 mm |
| MFT-FOX VI 120 L 6.5 / 11 | 2305946 | 120 mm |
| MFT-FOX VI 140 L 6.5 / 11 | 2305945 | 140 mm |
| MFT-FOX VI 160 L 6.5 / 11 | 2305944 | 160 mm |
| MFT-FOX VI 180 L 6.5 / 11 | 2305943 | 180 mm |
| MFT-FOX VI 200 L 6.5 / 11 | 2305942 | 200 mm |
| MFT-FOX VI 220 L 6.5 / 11 | 2305941 | 220 mm |
| MFT-FOX VI 240 L 6.5 / 11 | 2305940 | 240 mm |
| MFT-FOX VI 260 L 6.5 / 11 | 2305939 | 260 mm |
| MFT-FOX VI 280 L 6.5 / 11 | 2305938 | 280 mm |
| MFT-FOX VI 300 L 6.5 / 11 | 2305937 | 300 mm |

The length shown includes the isolator thickness.



Direct fastening
Screws and
Anchors

BRACKET PROFILE ADJUSTMENT



| Profiles | MFT-T 60x80x1,8 6m 60x100x1,8 6m 60x120x1,8 6m | | MFT-T 40x80x1,8 6m | | MFT-L 60x40x1,8 6m | | MFT-L 40x40x1,8 6m" | |
|-----------------------------|---|--------|-----------------------|--------|-----------------------|--------|------------------------|--------|
| | A min* | A max* | A min* | A max* | A min* | A max* | A min* | A max* |
| MFT-FOX VI 40 S/M/L 6,5/11 | 75,8 | 80 | 55,8 | 60 | 75,8 | 80 | 55,8 | 60 |
| MFT-FOX VI 60 S/M/L 6,5/11 | 75,8 | 100 | 61,8 | 80 | 75,8 | 100 | 60 | 80 |
| MFT-FOX VI 80 S/M/L 6,5/11 | 81,8 | 120 | 81,8 | 100 | 80 | 120 | 80 | 100 |
| MFT-FOX VI 100 S/M/L 6,5/11 | 101,8 | 140 | 101,8 | 120 | 100 | 140 | 100 | 120 |
| MFT-FOX VI 120 S/M/L 6,5/11 | 121,8 | 160 | 121,8 | 140 | 120 | 160 | 120 | 140 |
| MFT-FOX VI 100 S/M/L 6,5/11 | 141,8 | 180 | 141,8 | 160 | 140 | 180 | 140 | 160 |
| MFT-FOX VI 40 S/M/L 6,5/11 | 161,8 | 200 | 161,8 | 180 | 160 | 200 | 160 | 180 |
| MFT-FOX VI 60 S/M/L 6,5/11 | 181,8 | 220 | 181,8 | 200 | 180 | 220 | 180 | 200 |
| MFT-FOX VI 80 S/M/L 6,5/11 | 201,8 | 240 | 201,8 | 220 | 200 | 240 | 200 | 220 |
| MFT-FOX VI 100 S/M/L 6,5/11 | 221,8 | 260 | 221,8 | 240 | 220 | 260 | 220 | 240 |
| MFT-FOX VI 120 S/M/L 6,5/11 | 241,8 | 280 | 241,8 | 260 | 240 | 280 | 240 | 260 |
| MFT-FOX VI 140 S/M/L 6,5/11 | 261,8 | 300 | 261,8 | 280 | 260 | 300 | 260 | 280 |
| MFT-FOX VI 160 S/M/L 6,5/11 | 281,8 | 320 | 281,8 | 300 | 280 | 320 | 280 | 300 |
| MFT-FOX VI 180 S/M/L 6,5/11 | 301,8 | 340 | 301,8 | 320 | 300 | 340 | 300 | 320 |

* Die angeführte Distanz ist valide für Profile mit 1,8 mm.



This is an interactive page! Click on the move-back button to jump back to the CONTENT AND OVERVIEW.

PRODUCTS RANGE

Bracket fastener

HUS-HR



HRD-H



HST-R



HSA-R



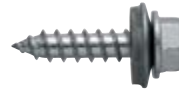
HIT-HY 270



HIT-HY 200-A



S-MP 53S



S-MD 51S / S-MD 53S / S-MD 55S



Direct fastening:

Powder-actuated tool



Universal nail X-CR P8



DX cartridge 6.8/11 M10



Brackets

MFT-FOX VI Small



MFT-FOX VI Medium



MFT-FOX VI Large



PRODUCTS RANGE

Profiles

MFT-L



MFT-T



MFT-HP



Profile to bracket fastener

S-AD 01S



Profile to profile fastener

S-MD 51LS

Accessories to profile fastener

S-AD 01LHSS



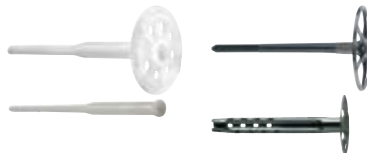
Other accessories

MFT-H



Insulation fasteners

Insulation fasteners





Hilti Corporation
9494 Schaan Liechtenstein
P +423-234 2111

www.facebook.com/hiltigroup
www.hilti.group