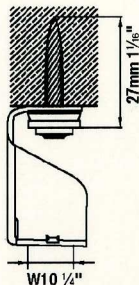
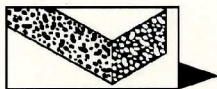


# X-HS W10 U27 P8 S15 # 386227

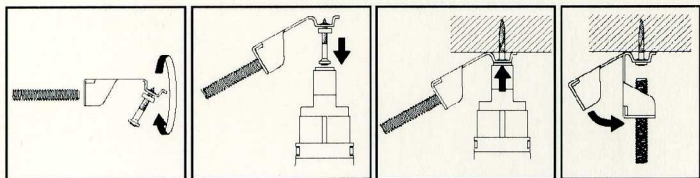


für/for/pour-

DX 460 F8

DX 351 F8

DX 36



**Suitable for indoor use in other than wet locations.  
Suitable for maximum 3.05 m (10.0 ft) support  
interval. Hanger will accept 1/4-inch or 3/8-inch  
diameter threaded rod for support of conduit, cable,  
or tubing. May be used in vertical or horizontal  
mounting orientations to concrete and steel.  
Load rating = 100 lb [Max. 2-inch EMT, RMC or IMC  
and Max. 3-inch SCH 40 & 80 Rigid PVC conduit].**

387214