

SIZE Seismic Set	SIZE HUS3	SIZE HUS4	t _{fix, effective} (mm)
M10	8	8	t _{fix} - 7 mm
M12	10	10	t _{fix} - 8 mm
M16		12	t _{fix} - 9 mm
M16	14	14	t _{fix} - 9 mm
M20		16	t _{fix} - 13 mm

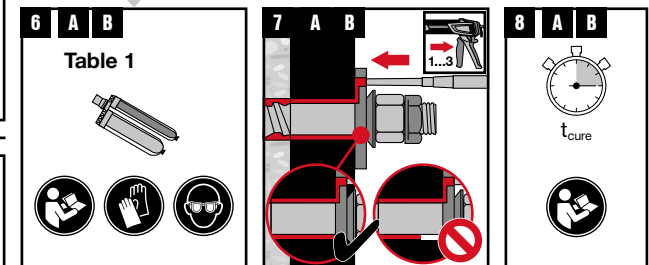
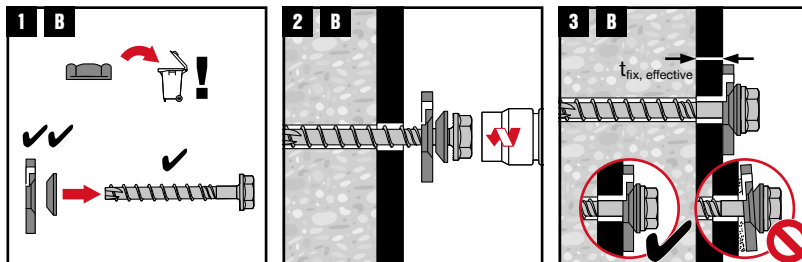
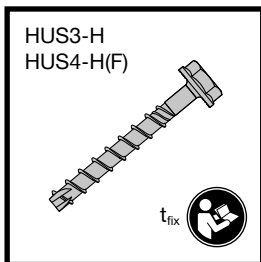


Table 1

Anchor	HIT-HY... HIT-RE... HVU2, HVU-TZ	HST, HST2, HST3, HST4, HSL4, HDA, HMU, HSA	HUS3 HUS4	HUS4 Max
Element	HAS(-U), HAS-E(-HCR)-R)TZ, HAS(-HCR)-R)TZ, HIT-Z/V/C, AM, HZA, HIS-N	/	/	HUS4

HIT-HY...	HIT-RE...
HIT-HY 200-A (V3) HIT-HY 200-R (V3) HIT-HY 270 HIT-HY 170 HIT-HY 100 HIT-CT1	HIT-RE 500 V4 HIT-RE 500 V3 HIT-RE 100 HIT-RE 100-HC HIT-RE 10

Fill filling set with:

HIT-HY...	✓	✓	✓	✓
HIT-RE...	✓	✗	✓	✓

✓	Can be used (⚠ check approval coverage in p2 of the IFU and in the relevant ETA)
✗	Cannot be used



