

-10°C - 40°C / 14°F - 104°F

max 3°

HAS-D	d_f [mm]	t_{fix} [mm]	d_o [mm]	h_d [mm]	Δ [mm]	L_1 [mm]	SW [mm]	T_{inst} [Nm]
M12×160	16	12...25	14	132	≥ 28	90	18/19*	30
M12×185	16	12...50	14	157	≥ 28	110	18/19*	30
M16×200	20	16...30	18	165	≥ 36	122	24	50
M16×220	20	16...50	18	185	≥ 36	138	24	50
M16×245	20	16...75	18	210	≥ 36	160	24	50
M16×275	20	16...105	18	240	≥ 36	183	24	50
M20×280	26	20...50	24	232	≥ 48	174	30	80

HIT-HY 200-A
HIT-HY 200-R
HIT-HY 200-A V3
HIT-HY 200-R V3

1 A B

2 A B

A

HIT-RE-M

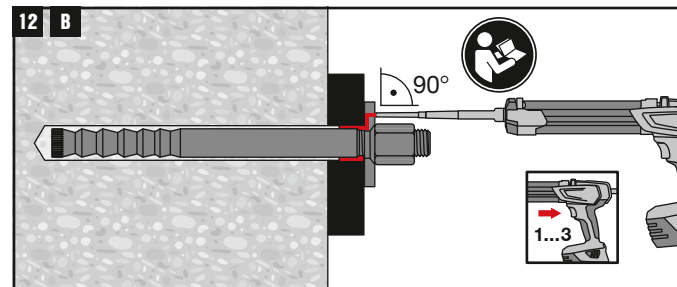
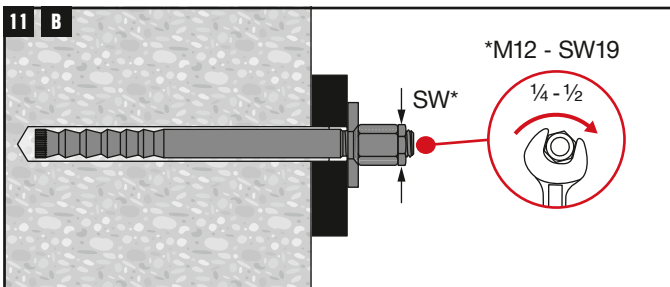
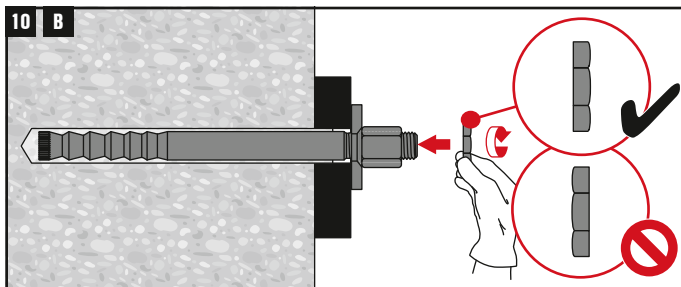
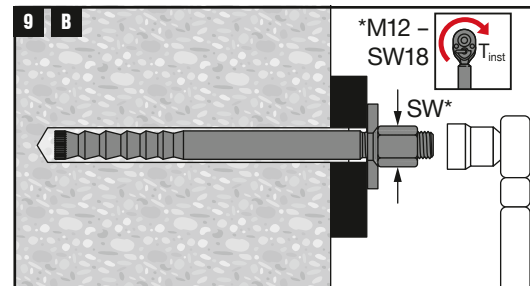
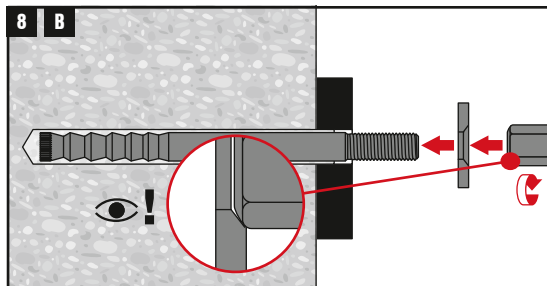
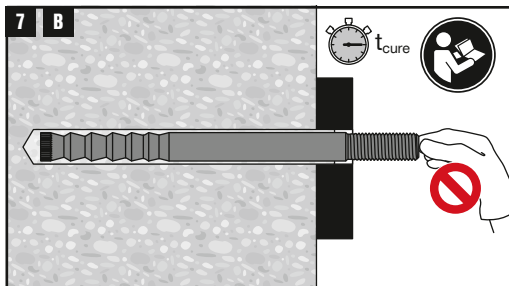
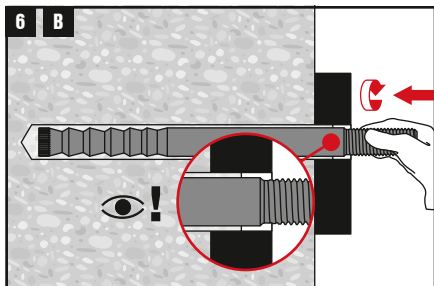
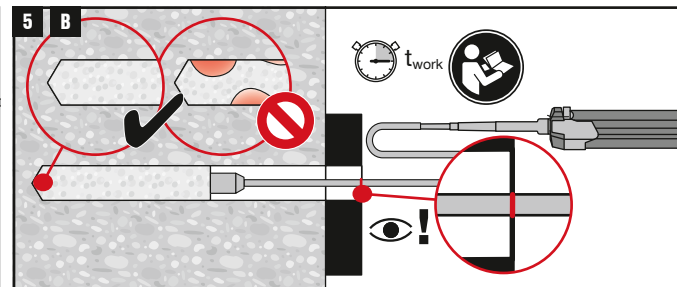
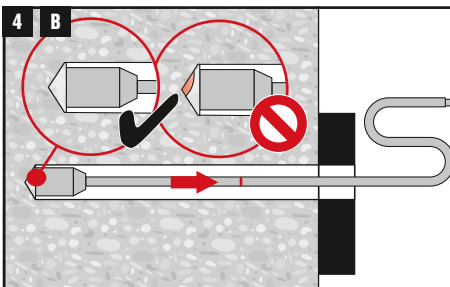
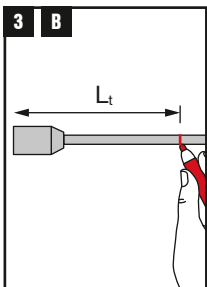
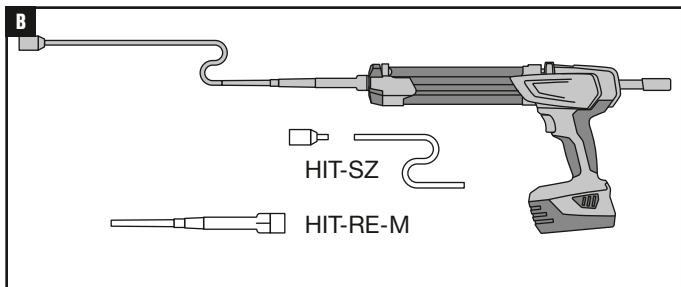
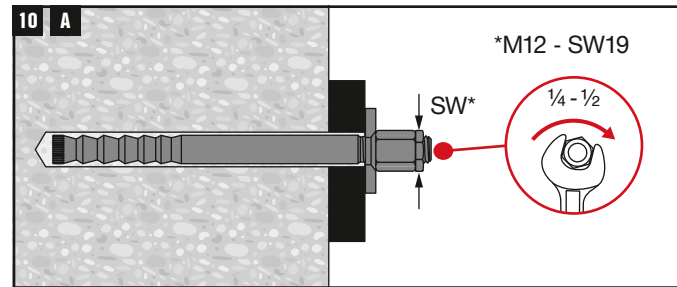
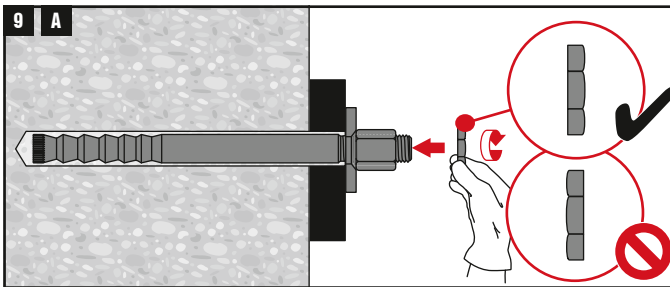
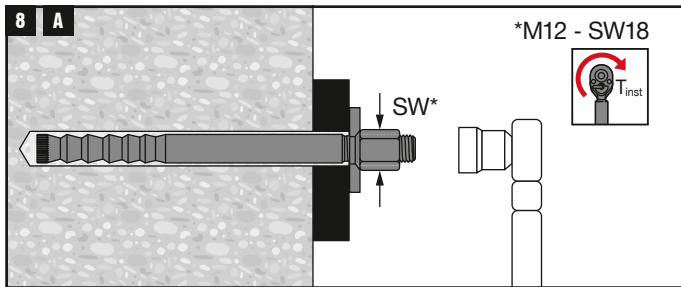
3 A

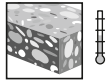
4 A

5 A

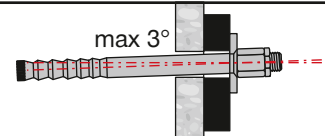
6 A

7 A

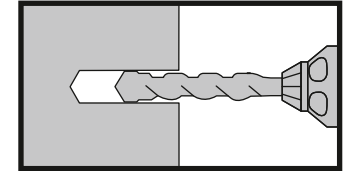




-10°C - 40°C / 14°F - 104°F



HIT-HY 200-A
HIT-HY 200-R
HIT-HY 200-A V3
HIT-HY 200-R V3



HAS-D	d_f [mm]	t_{fix} [mm]	d_o [mm]	h_o [mm]	Δ [mm]	h_{ef} [mm]	L_p	SW [mm]	T_{inst} [Nm]
M12×160	14	12 - 25	14	$132 - t_{fix}$	≥ 28	$125 - t_{fix}$	$70 - t_{fix}$	18/19*	30
M12×185	14	12 - 50	14	$157 - t_{fix}$	≥ 28	$150 - t_{fix}$	$90 - t_{fix}$	18/19*	30
M16×200	18	16 - 30	18	$165 - t_{fix}$	≥ 36	$155 - t_{fix}$	$110 - t_{fix}$	24	50
M16×220	18	16 - 50	18	$185 - t_{fix}$	≥ 36	$175 - t_{fix}$	$125 - t_{fix}$	24	50
M16×245	18	16 - 75	18	$210 - t_{fix}$	>36	$200 - t_{fix}$	$150 - t_{fix}$	24	50
M16×275	18	16 - e105	18	$240 - t_{fix}$	>36	$230 - t_{fix}$	$180 - t_{fix}$	24	50
M20×280	24	20 - 50	24	$232 - t_{fix}$	≥ 48	$220 - t_{fix}$	$165 - t_{fix}$	30	80

